



Everlasting Iron Works - Stainless Steel Specialists

- DIY Kits - All components for you to construct your own balustrading
- All stainless steel fabrication and construction needs catered for
- Precision components built to full CAD specification
- High quality and modern designs to complement new and refurbished homes

..."At Everlasting Iron Works, we understand your desire to create the most prestige environment at a most reasonable price. Our in-house stainless steel experts, can shape, polish and fabricate the most demanding stainless steel applications"...



...Come and see our breathtaking showroom to see exactly what you want...

Everlasting Iron Works Pty Ltd
1 - 3 Webber Pde, Keilor East
Victoria 3033

Tel: 03 9336 4411

Fax: 03 9331 7191

email: info@everlastingironworks.com.au
website: www.everlastingironworks.com.au

STAUNTION



Introducing our new *Ready to go Stauntions...*

Different Capping
Options Available



Finished Finish, 2"
Stainless Tube
(304 or 316)

Standard Height
approx 1015mm,
Custom Available

Options available:

- Predrilled Holes
- Eyelets Mounted
- Saddles Mounted
- Other options on enquiry

3 Hole Mounting under
Cover Plate, 8mm
diameter at 80mm PCD

Address: 1-3 Webber Pde, Keilor East, VIC, Aust

Phone: +61 3 9336 4411

Fax: +61 3 9331 7191

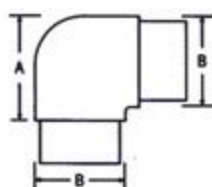
Email : info@everlastingironworks.com.au

Web : www.everlastingironworks.com.au



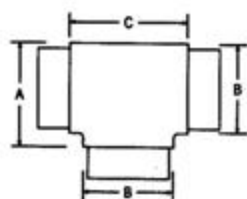
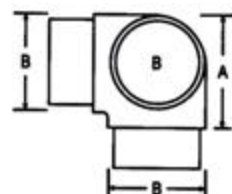
© Copyright 2004

Some of our Stainless Steel Accessories...



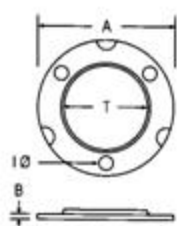
SS-FJ90

SS-FJ90T



SS-FJT

SS-ARSR-IF



SS-RBP-WC

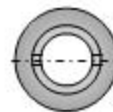
Some of our Stainless Steel Accessories...



SS-S1022



SS-S1002



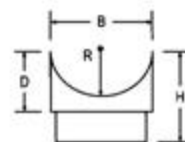
SS-S1101



SS-T50
(length in mm)



SS-T12
(length in mm)



SS-PJ-FF